

LPP5-S-WE

Harbach Positioning rotators are a robust heavy duty design built to withstand the harsh and rugged environments expected in the world of welding and fabrication requirements. Our proven design uses 1 off 330mm diameter 80mm width replaceable hard-wearing polyurethane tyres mounted onto a cast steel drum for maximum durability and superior traction.

The powered drive unit drives all wheels synchronized using the AC gear motors via the latest inverter control. A hand held low voltage control pendant on a 10-meter cable provides the operator with full control of the rotator including a potentiometer for varying the speed, forward/reverse and stop.

All **Harbach Positioning** rotators are grit blasted to SA 2.5 for all structural steel and polyurethane paintwork ensuring that your investment provides you with many years of reliable, trouble-free use.

The idler roll has the same dimensions to match the powered drive unit. See GA drawing attached.



Power rolls specifications

Model: LPP5-S-WE

Load Capacity: 5 metric ton (1 power & 1 idler)

Rotation Capacity: 5 metric ton (1 power)

Rotation Speed: 103 to 1030mm/min

Vessel diameter: Min 235mm to Max 4932m (at 1800mm C-C) @ 40 degree included angle

Incoming supply: 380/480V/3 Phase/50-60/hz (specify input voltage when ordering)

AC Inverter: 0.55KW

Motor rating: 2 x 0.25KW AC motors

Control voltage: 24V low voltage control

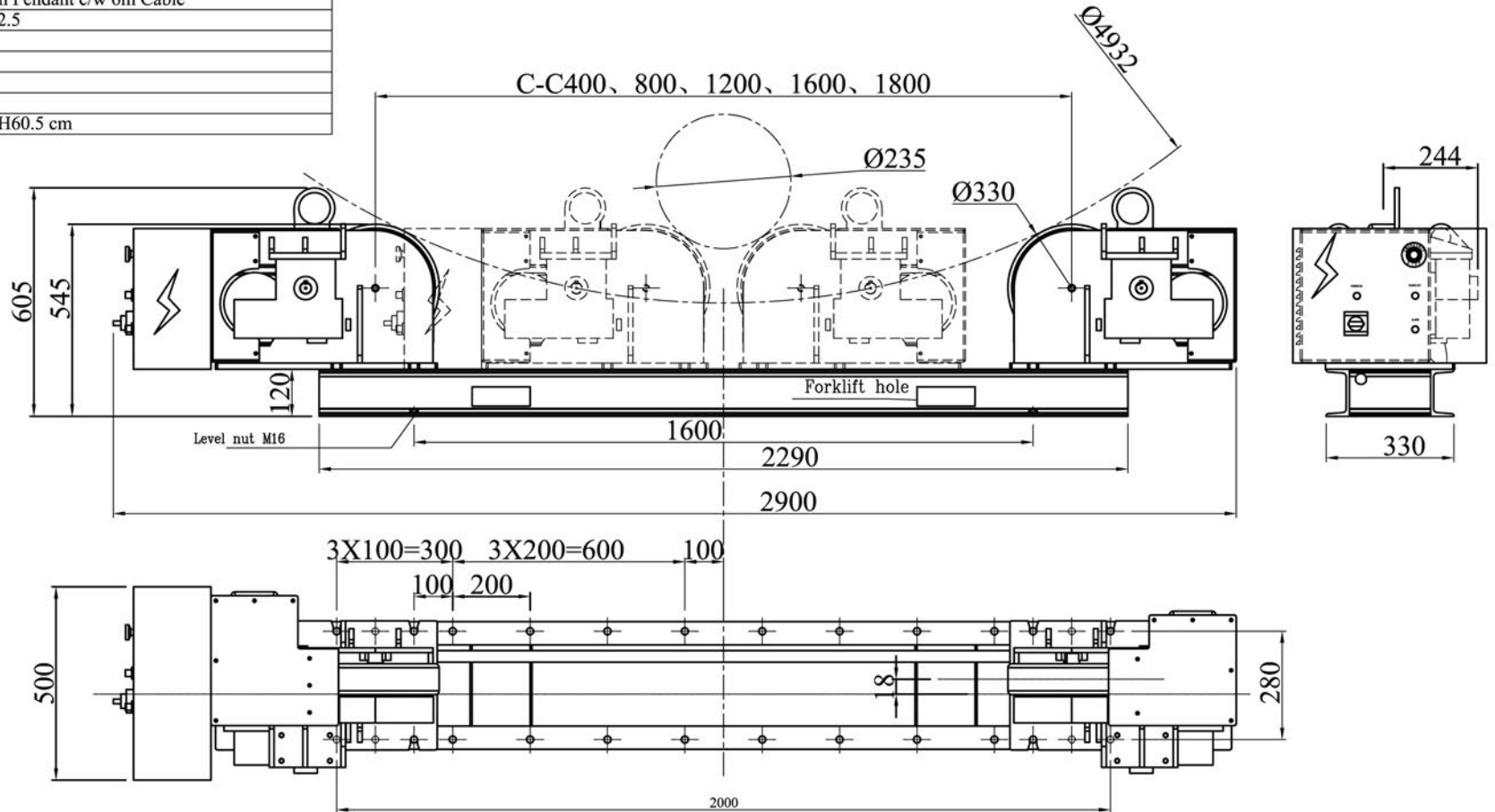
Weight: 368Kg Drive
206Kg Idler

LPP5-S-WE (5 Tonne)(single)

Specifications for Rotator

1	Model	LPP5-D
2	Loading Capacity	2.5 TON
3	Turning Capacity	5 TON
4	Vessel Size Min.	Ø235mm at 90° Included Angle, C-C 400mm
5	Vessel Size Max.	Ø4932mm at 40° Included Angle, C-C 1800mm
6	Tyre Type & Size	Polyurethane, 330mm x 80mm, Shore 'A' 90-95
7	Roller Speed	103 ~ 1030mm/min at 5 to 50Hz
8	Roller Drive Motor	2 x 0.25kW c/w Forced Cooling
9	Roller Drive Control	0.55kW AC Inverter
10	Electrical Panel	Yes
11	Incoming Supply	380/400/415/440/460/480V-3P-50/60HZ
12	Control Voltage	24Vac
13	Control Means	Via Push Button Pendant c/w 6m Cable
14	Surface Preparation	Gritblast to SA2.5
15	Painting	Power Coating
16	Colour	RAL3003 Red
17	Qty	
18	Weight	368 kg
19	Shipping Dimension	L290 x W50 x H60.5 cm

Note:
1) This drawing is accurate at time of preparation and may be subjected to final design.



All dimensions in mm unless otherwise specified.



CUSTOMER APPROVAL

CHECKED BY:

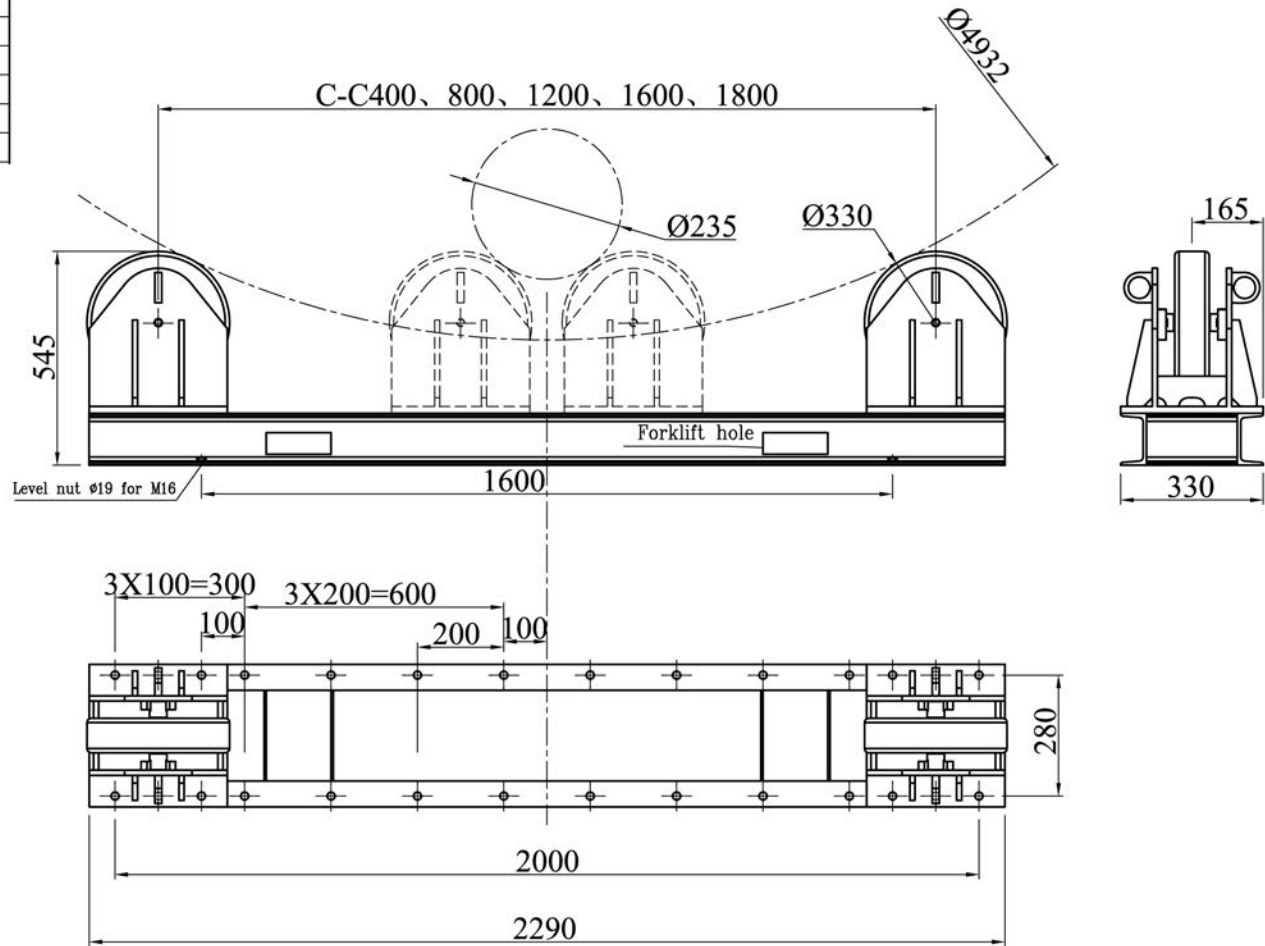
DRAWN BY:

REV	DATE	DESCRIPTION	EDIT BY	REMARKS
CUSTOMER:				
DRAWING NAME: Rotator SMT power unit				
DRAWING NO: LPP5-D				
THE ORIGINAL AND ALL COPIES OF THIS DOCUMENT TOGETHER WITH THE COPYRIGHT THEREOF ARE THE SOLE PROPERTY OF HARBACH MARKETING, INC. DESIGN AND SPECIFICATIONS ARE SUBJECT TO CHANGE WITHOUT PRIOR NOTICE.				
				SCALE: N.T.S.
				REVISION: 0
				SHEET: 1 OF 1

2012-2-14

Specifications for Rotator

1	Model	LIP5
2	Loading Capacity	2.5 TON
3	Turning Capacity	NA
4	Vessel Size Min.	Ø235mm at 90° Included Angle, C-C 400mm
5	Vessel Size Max.	Ø4932mm at 40° Included Angle, C-C 1800mm
6	Tyre Type & Size	Polyurethane, 330mm x 80mm, Shore 'A' 90-95
7	Surface Preparation	Gritblast to SA2.5
8	Painting	Powder coating
9	Colour	RAL3003
10	Qty	
11	Weight	206KG
12	Shipping dimension	2290mm(L)X330mm(B)X505mm(H)



Note:
 1] This drawing is accurate at time of preparation and may be subjected to final design.

All dimensions in mm unless otherwise specified.



CUSTOMER APPROVAL

CHECKED BY:

DRAWN BY:

2012-2-16

REV	DATE	DESCRIPTION	EDIT BY	REMARKS
CUSTOMER:				
DRAWING NAME: Rotator SMT Idler				
DRAWING NO: LIP5				
THE ORIGINAL AND ALL COPIES OF THIS DOCUMENT TOGETHER WITH THE COPYRIGHT THEREOF ARE THE SOLE PROPERTY OF HARBACH-MARKETING, INC. DESIGN AND SPECIFICATIONS ARE SUBJECT TO CHANGE WITHOUT PRIOR NOTICE.				SCALE: N.T.S.
				REVISION: 0
				SHEET: 1 OF 1